

Pediatric Bradycardia Algorithm

Pediatric Advanced Life Support

American Academy of Pediatrics

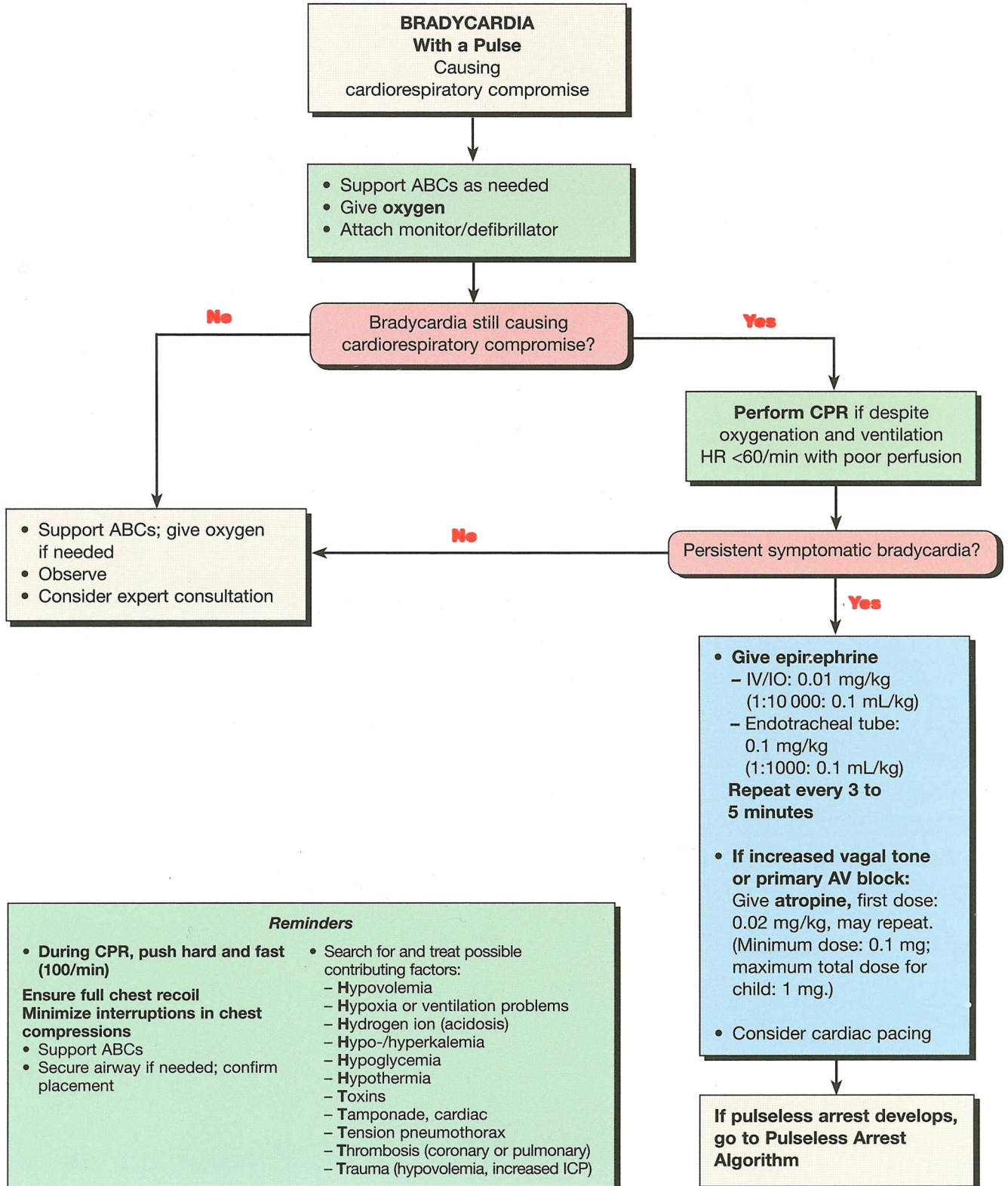
DEDICATED TO THE HEALTH OF ALL CHILDREN™



American Heart Association



Learn and Live®



Reminders

- During CPR, push hard and fast (100/min)
- Ensure full chest recoil
- Minimize interruptions in chest compressions
- Support ABCs
- Secure airway if needed; confirm placement
- Search for and treat possible contributing factors:
 - Hypovolemia
 - Hypoxia or ventilation problems
 - Hydrogen ion (acidosis)
 - Hypo-/hyperkalemia
 - Hypoglycemia
 - Hypothermia
 - Toxins
 - Tamponade, cardiac
 - Tension pneumothorax
 - Thrombosis (coronary or pulmonary)
 - Trauma (hypovolemia, increased ICP)